



Bridge Road, Bromsgrove, B60 3GT

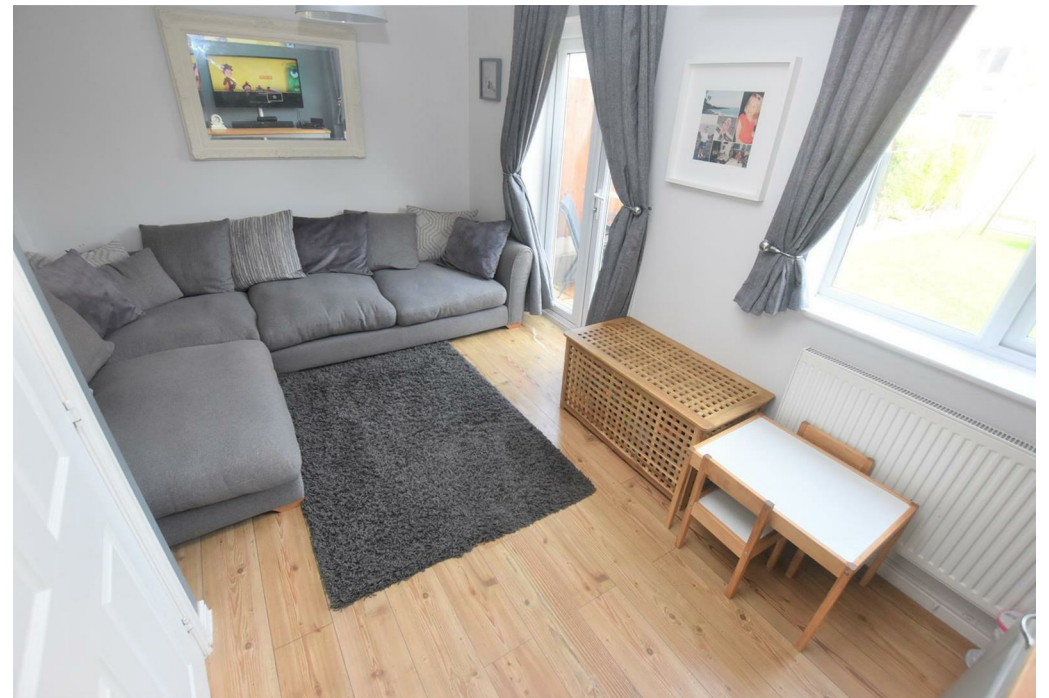
Property Description

DEPOSIT ALTERNATIVE OPTION AVAILABLE

We are pleased to offer this family home on the outskirts of Bromsgrove Town Centre.

The property briefly comprises: fitted kitchen, family lounge which gives access to the rear garden via double doors, a downstairs WC, two bedrooms, the master benefitting from an en-suite shower room and a family bathroom. To the rear of the property is an easily maintained, enclosed garden which gives access to the single garage. The property also benefits from off road parking. This is a lovely property which would be ideal for a professional couple or small family looking to make a home.





Key Features

- End Terraced Property
- Fitted Kitchen
- Family Lounge
- Two Double Bedrooms
- Family Bathroom & En Suite Shower Room
- Downstairs WC
- Enclosed Rear Garden
- Off Road Parking & Garage
- Popular Residential Area

£1,050 PCM